

F|S

FABRICS-STORE.COM

*Our linen is nothing short of addicting*

# MARIA PAULA DRESS



## SUMMER GETS SEXY

*We found your new go-to dress for summer! Maria Paula looks effortlessly chic with just the right amount of sexy.*

Available in Ladies Sizes 0/2 to 28/30

866.620.2008 [ASK@FABRICS-STORE.COM](mailto:ASK@FABRICS-STORE.COM) [FABRICS-STORE.COM](http://FABRICS-STORE.COM)

---

MASHA WEARS IC64 RUST SOFTENED 100% LINEN (5.3 OZ/YD<sup>2</sup>)



Our lovely model Masha is wearing Size 4/6.

---

# MARIA PAULA PATTERN

---

*The sleeveless bodice, softly gathered midi skirt and a sensual open back give this simple silhouette a certain luster that can be dressed up or down for any occasion.*

*Sized for ladies 0/2 to 28/30*

*Simple step-by-step instructions on our blog [The Thread at Fabrics-Store.com](#)*

# PATTERN DETAILS

#FABRICSSTOREMARIAPAULAPATTERN

## MARIA PAULA PATTERN

Ladies Duo Sizes: 0/2 to 28/30



- Semi-fitted Bodice.
- Back button closure.
- Open back.
- Gathered skirt waist.
- Side patch pockets.

## SEWING INSTRUCTIONS

This pattern is featured on our blog “The Thread” at [Fabrics-Store.com](http://Fabrics-Store.com). There you will find step-by-step photo instructions and can ask questions, post comments, or share your progress. Simply visit: [blog.fabrics-store.com](http://blog.fabrics-store.com) and enter “Maria Paula Pattern” in the search box.

## SIZING & YARDAGE

Ladies Size Guide Based on Body Measurements in Inches

	XS	S	M	L	XL	2X	3X	4X
Size	0/2	4/6	8/10	12/14	16/18	20/22	24/26	28/30
Bust	33-34	35-36	37-38	39-40	42-44	46-48	50-52	54-56
Waist	25-26	27-28	29-30	31-32	34-36	38-40	42-44	46-48
Hip	35-36	37-38	39-40	41-42	44-46	48-50	52-54	56-58

Finished Garment Measurements - Approximate in Inches

Size	0/2	4/6	8/10	12/14	16/18	20/22	24/26	28/30
Bust	37	39	41.5	44	48	52	56.5	61
Waist	37	39	41.5	44	48	52	56.5	61
Hip	52	54	56.5	59	63	67	71.5	76

Estimated Yardage\* - 54" Width Linen

Size	0/2	4/6	8/10	12/14	16/18	20/22	24/26	28/30
Yardage	2 Yards		2 1/2 Yards			3 Yards		

\*Allow up to 10% extra fabric for shrinkage.

ALL SEAM ALLOWANCES ARE INCLUDED AND NOTED ON THE PATTERN AND IN THE TUTORIAL.

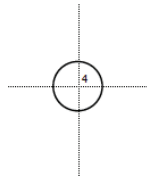
## “Maria Paula” Sewing Pattern

For instructions visit: [blog.fabrics-store.com](http://blog.fabrics-store.com) and enter “Maria Paula Pattern” in the search box.

**2 Inch  
Square to  
Check Print  
Accuracy**

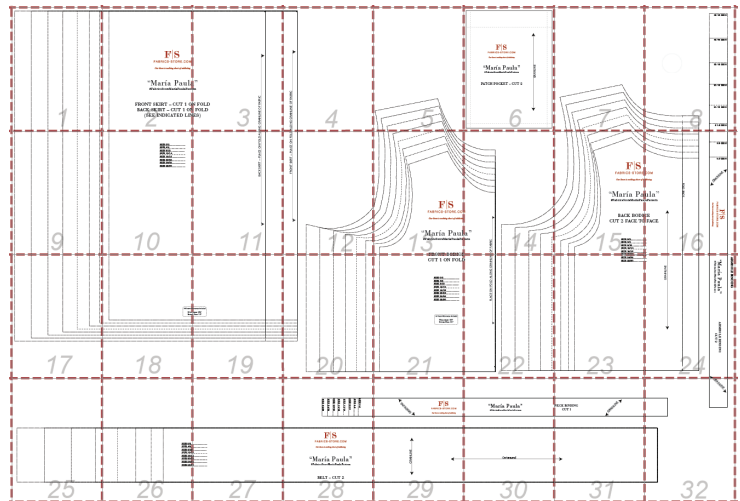
**PRINT ONLY THIS PAGE FIRST TO CHECK SCALE**  
IMPORTANT! PRINT AT ACTUAL SIZE, 100%, OR NO SCALING.

*Formatted for paper sizes A4 and Letter.*



Simply overlap the page margins and align the markings in each corner to complete the circle and tape in place.

**Layered PDF:**  
This pattern has embedded layers so you can print all sizes or a single size. See your .pdf viewers 'Layers' menu.



**All Seam Allowances Included**

Main seams: 3/8"  
Bottom Hem: 1.5"

1

F|S

FABRICS-STORE.COM

*Our linen is nothing short of addicting*

“María Paula

#FabricStoreMaríaPaulaPatte

FRONT SKIRT – CUT 1 ON  
BACK SKIRT – CUT 1 ON  
(SEE INDICATED LIN

2

”  
rn

N FOLD  
FOLD  
(ES)

3

ONG GRAINLINE OF FABRIC





ALONG GRAINLINE OF FABRIC



4

5

F|S

FABRICS-STORE.COM

*Our linen is nothing short of addicting*

“María Paula”

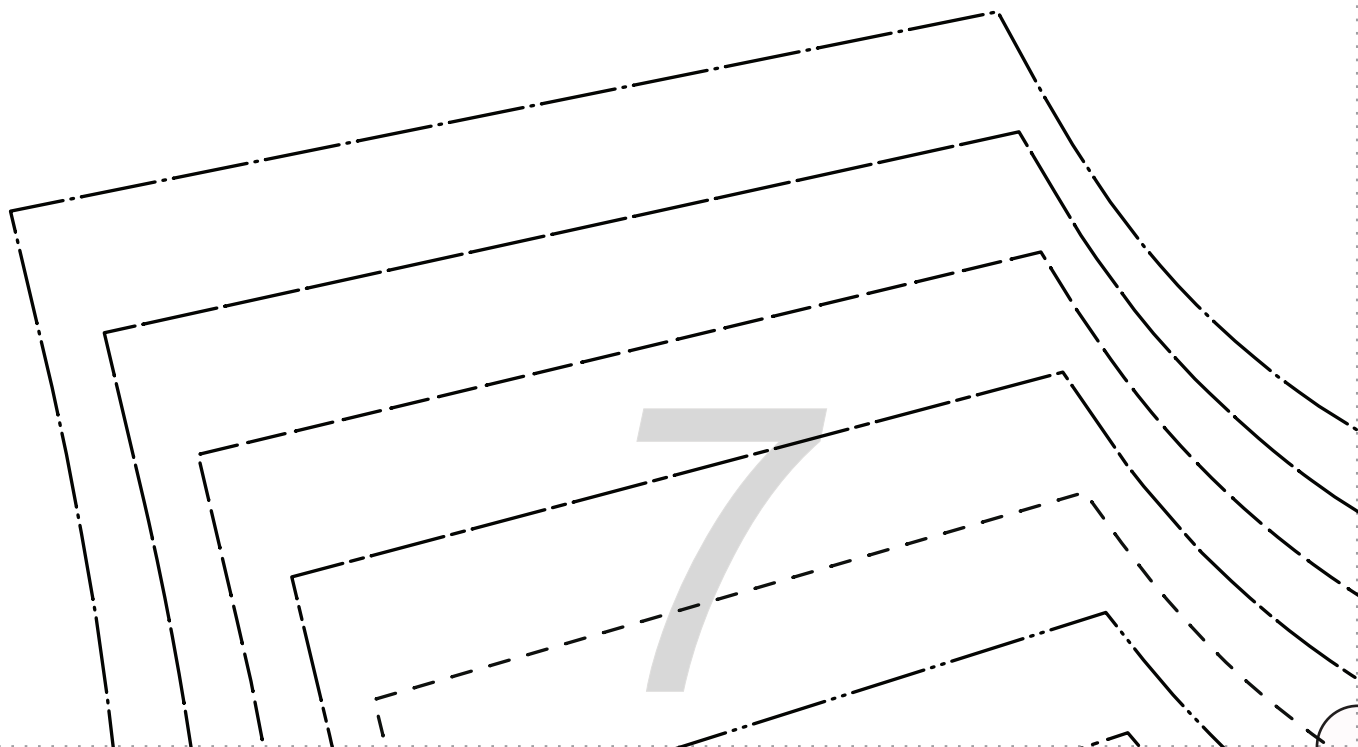
#FabricsStoreMaríaPaulaPattern

PATCH POCKET – CUT 2

GRAINLINE



6



SIZE 28/30

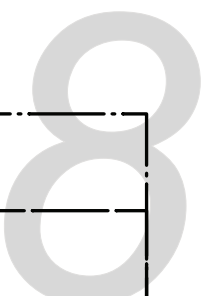
SIZE 24/26

SIZE 20/22

SIZE 16/18

SIZE 12/14

SIZE 8/10



9

SIZE 0/2 \_\_\_\_\_

SIZE 4/6 \_\_\_\_\_

SIZE 8/10 \_\_\_\_\_

SIZE 12/14 \_\_\_\_\_

SIZE 16/18 \_\_\_\_\_

SIZE 20/22 \_\_\_\_\_

SIZE 24/26 \_\_\_\_\_

SIZE 28/30 \_\_\_\_\_

10

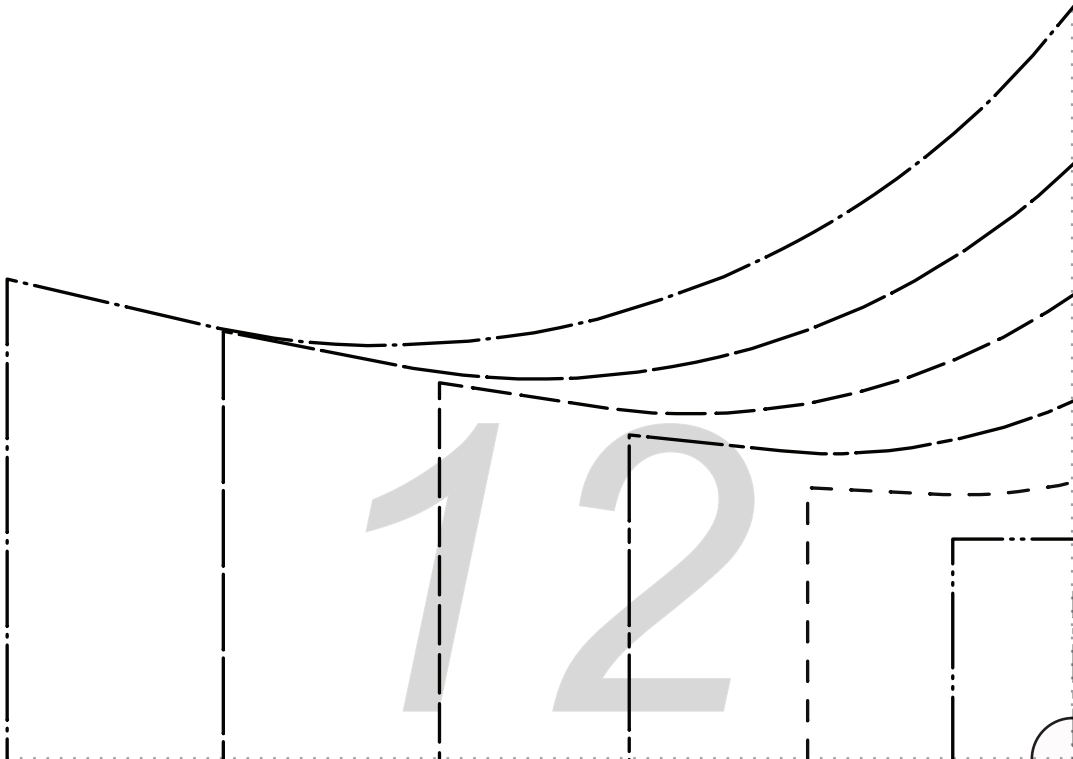
11

BACK SKIRT -- PLACE ON FOLD ALONG





FRONT SKIRT -- PLACE ON FOLD





F|S

FABRICS-STORE.COM

*Our linen is nothing short of addicting*

“María Paul

#FabricsStoreMaríaPaulaPat

13

FRONT BODICE

M

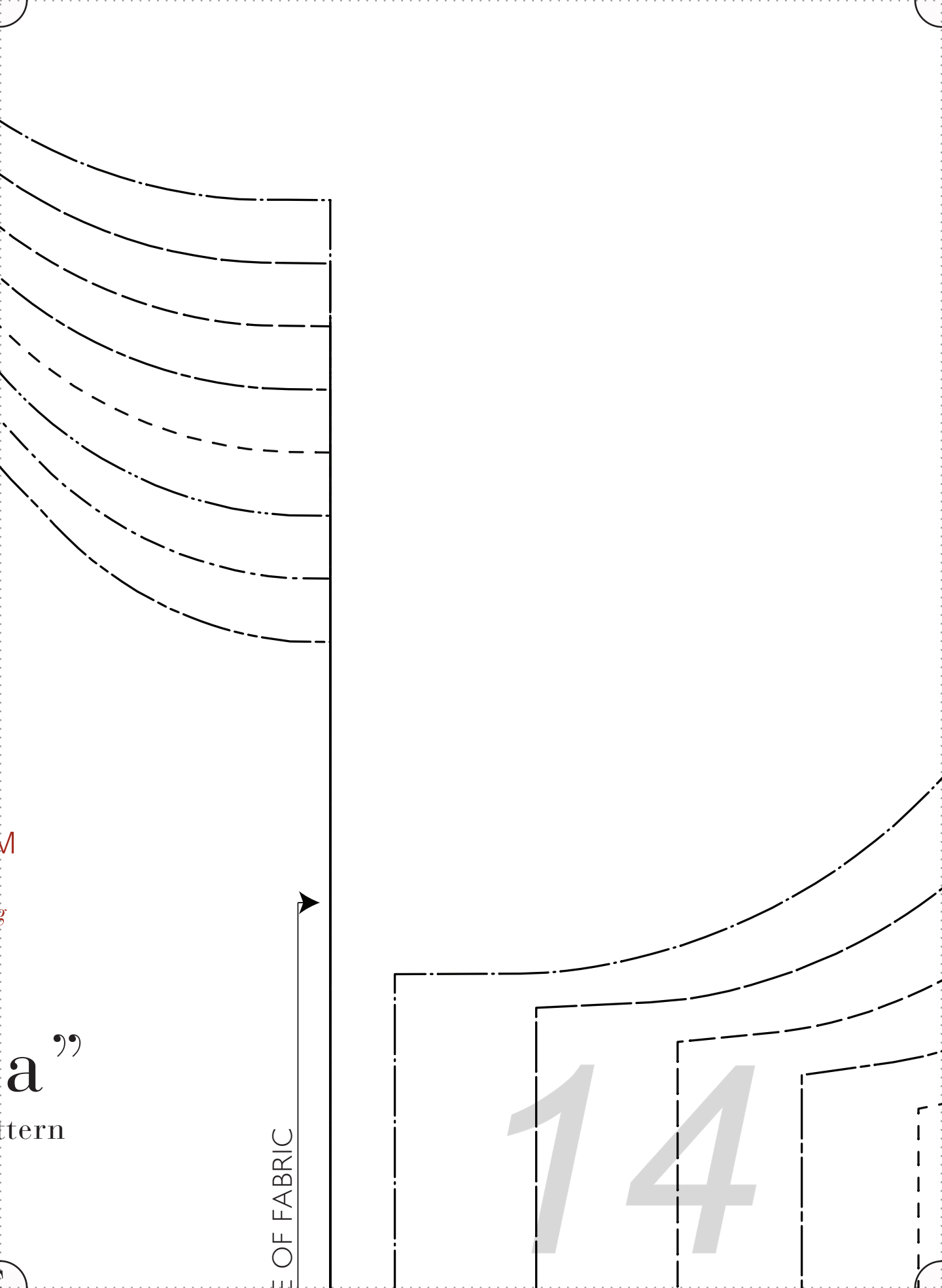
g

a”

tern

E OF FABRIC

14





F|S

FABRICS-STORE

*Our linen is nothing short of a*

“María Pa

#FabricStoreMaríaPau

BACK BODICE  
CUT 2 FACE TO

15

SIZE 0/2

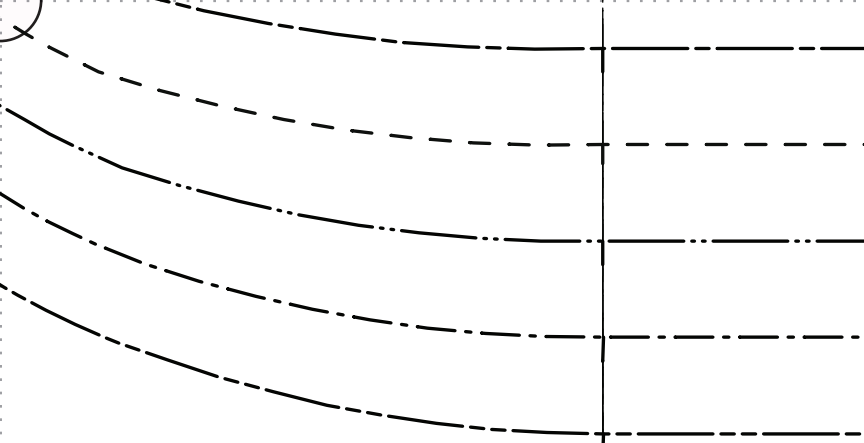
SIZE 4/6

SIZE 8/10

SIZE 12/14

SIZE 16/18

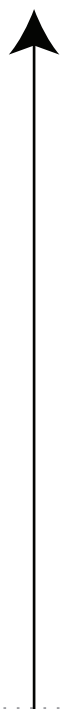
SIZE 20/22



COM  
*ddicting*

ula”  
laPattern

CE  
FACE



FOLD BACK

SIZE 4/6  
SIZE 0/2



**F|S**  
FABRICS-STORE.COM  
*Our linen is nothing short of addicting*

16



17

All Seam All

Main

Bottom

18

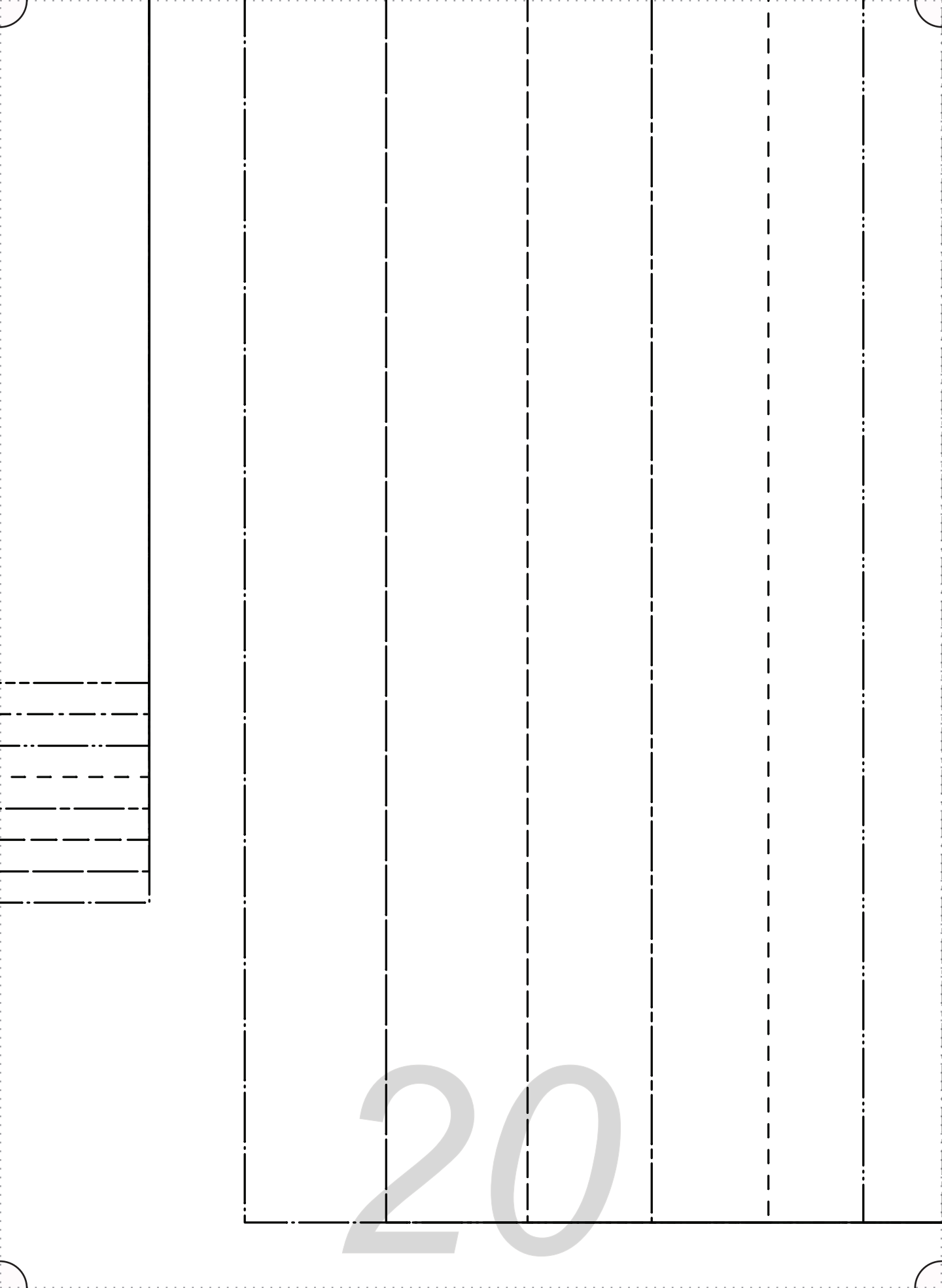
Allowances Included

Seams: 3/8"

in Hem: 1.5"

19





20

FRONT BODICE  
CUT 1 ON FOLD

SIZE 0/2 \_\_\_\_\_

SIZE 4/6 \_\_\_\_\_

SIZE 8/10 \_\_\_\_\_

SIZE 12/14 \_\_\_\_\_

SIZE 16/18 \_\_\_\_\_

SIZE 20/22 \_\_\_\_\_

SIZE 24/26 \_\_\_\_\_

SIZE 28/30 \_\_\_\_\_

All Seam Allowances Included

Main seams: 3/8"

Bottom Hem: 1.5"

PLACE ON FOLD ALONG GRAINLINE



22

SIZE 20/22

SIZE 24/26

SIZE 28/30

23

ARMHOLE BINDING

“María Paula”

#FabricsStoreMaríaPaulaPattern

ARMHOLE BINDING

CUT 2

GRAINLINE



--	--	--	--

25

SIZE 0/2

SIZE 4/6

SIZE 8/10

SIZE 12/14

SIZE 16/18

SIZE 20/22

SIZE 24/26

SIZE 28/30

26

4  
8  
2  
6  
0



SIZE 0/2
SIZE 4/6
SIZE 8/10
SIZE 12/14
SIZE 16/18
SIZE 20/22
SIZE 24/26
SIZE 28/30

F | S

FABRICS-STORE.COM

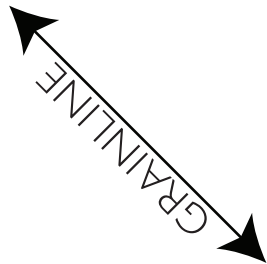
*Our linen is nothing short of addicting*

“María Paula”

#FabricStoreMaríaPaulaPattern

BELT – CUT 2

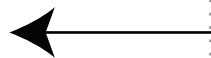
28



F|S

FABRICS-STORE.COM

*Our linen is nothing short of addicting*



29

---

# “María Paula”

#FabricsStoreMaríaPaulaPattern

---

GRAINLINE

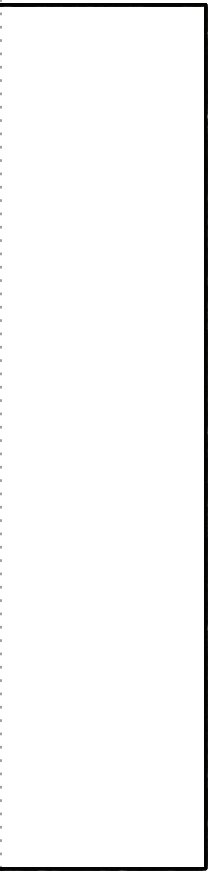
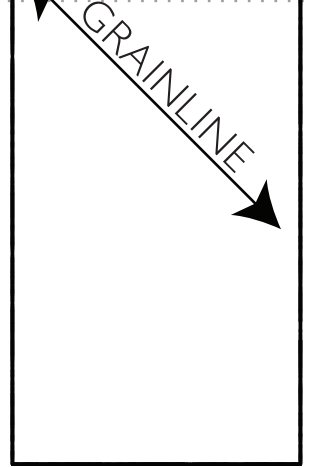
---

30

---

NECK BINDING  
CUT 1





32

---

# *Thank you*

---

*We work hard on making our patterns beautiful  
enough to meet your standards.*

*If you feel like sharing praise or helpful criticism,  
please send us your comments to [ask@fabrics-store.com](mailto:ask@fabrics-store.com)*